

Brochure

# MediaDoctor

Application Monitoring - Hardware Dashboard  
Application Module

**SI MEDIA s.r.l.**

**HeadQuarters:** Via Vostanza, 5 - 31039 Riese Pio X (TV) - Italy

**T** +39 0423 750075 **F** +39 0423 750150 **E** info@si-media.tv

**www.si-media.tv**

 @SIMedia1978

 SI Media

**APAC Branch Office:** 21 Serangoon North Ave 5, #06-04

Ban Teck Han Building, 554864 Singapore

**T** +65 8432 5394

SI Media is a private company founded in 1978 as a software house for Television management systems.

Today, SI Media is one of the leading providers with decades of experience in the development and deployment of Traffic, Playout Automation, Media Asset Management and NewsRoom solutions for TV Broadcasters.

The SI Media Traffic, Automation, MAM and Newsroom systems are available for deployment either as stand-alone solutions, or integrate in a homogeneous workflow. SI media solutions will easily interface with all the most popular archiving systems, video servers, CGs, Subtitle inserters as well as other traffic and automation systems.



# Table of Contents

1. MediaDoctor .....	2
2. Interface overview .....	2
2.1. Application monitoring.....	2
2.2. Hardware monitoring.....	3
2.2. Single Workstation Details .....	4
2.3. History Log .....	5
2.4. Windows Registry.....	7



# 1. MediaDoctor

MediaDoctor is the SI Media solution to monitor the SI Media's applications and hardware status of workstations from a single point of control.

## Key Features:

- Manage workstations from a single point
- Monitor application problems
- Configure alerts to ensure the network control
- Check disk space available capacity
- Manage and control Windows registry
- History data log graphics

Application monitoring permits to take under control the status of all SI Media's software.

Hardware monitoring in a single place allows to check hardware performance at a glance.

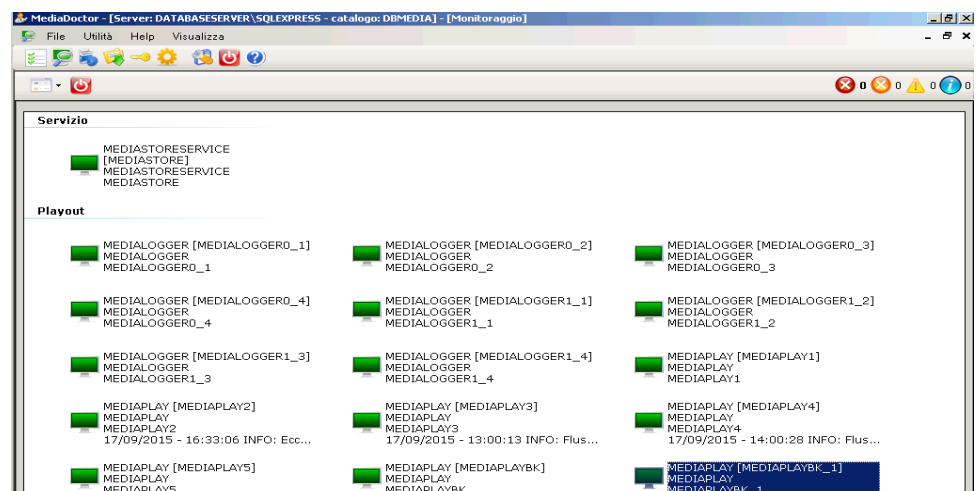
Knowing which servers and workstations are reaching or exceeding their limits gives time to process and execute a plan before system performance and workforce productivity suffer.

## 2. Interface overview

### 2.1. Application monitoring

Application monitoring permits to have under control SI Media's application problems, it reports, promptly, the issue and its gravity.

Application monitoring provide automated alerting, which informs the user via email and text messaging of any issue that needs attention when the problem is detected.



Application monitoring



### Benefits:

- Check application and hardware performance at a glance
- Prevent hardware failure
- Understand past problems
- Fix issues without disrupting end users via remote administration
- Alert via mail or text message
- Immediate and clear visibility of entire IT environment

## 2.2. Hardware monitoring

MediaDoctor allows to have a general view of hardware performance in all workstations in order to foresee any possible problem before it strikes.

This requires immediate and clear visibility of IT environment.

Workstation	State	IP (1)	IP (2)	Last Connecto	Operating syst	Processor	Mother board	RAM	CPU	CPU Te	Volume 0	Volume 1	NIC 0 - Down L	NIC 0 - Up Load	NIC 0 - Net Lo
DANY	✓	192.168.0.227	--	--	Microsoft Wind	GenuineIntel	Int Product: H55M-U	77%	4%	41°C	82%	1%	0%	0%	0%
NICOLA	✓	192.168.0.225	192.168.91.1	--	Microsoft Wind	GenuineIntel	Int Product: DG43NI	53%	0%	50°C	72%	35%	0%	0%	0%
MARA	✓	192.168.0.221	--	--	Microsoft Wind	GenuineIntel	Int Product: DZ775L	73%	4%	48°C	55%	7%	0%	0%	0%
MAURO	✓	192.168.0.224	192.168.47.1	--	Microsoft Wind	GenuineIntel	Int Product: 297 PC	67%	2%	46°C	21%	42%	0%	0%	0%
DOMENICO	✗	192.168.0.113	--	--	Microsoft Wind	GenuineIntel	Int Product: S3210S	0%	0%	0°C	Not available	Not available	Not available	Not available	Not available
NICOLA2	✗	192.168.0.164	--	--	Microsoft Wind	GenuineIntel	Int Product: H55M-U	0%	0%	0°C	Not available	Not available	Not available	Not available	Not available
ENRICO	✗	192.168.0.223	--	--	Microsoft Wind	GenuineIntel	Int Product: DP67BA	0%	0%	0°C	Not available	Not available	Not available	Not available	Not available

Hardware monitoring

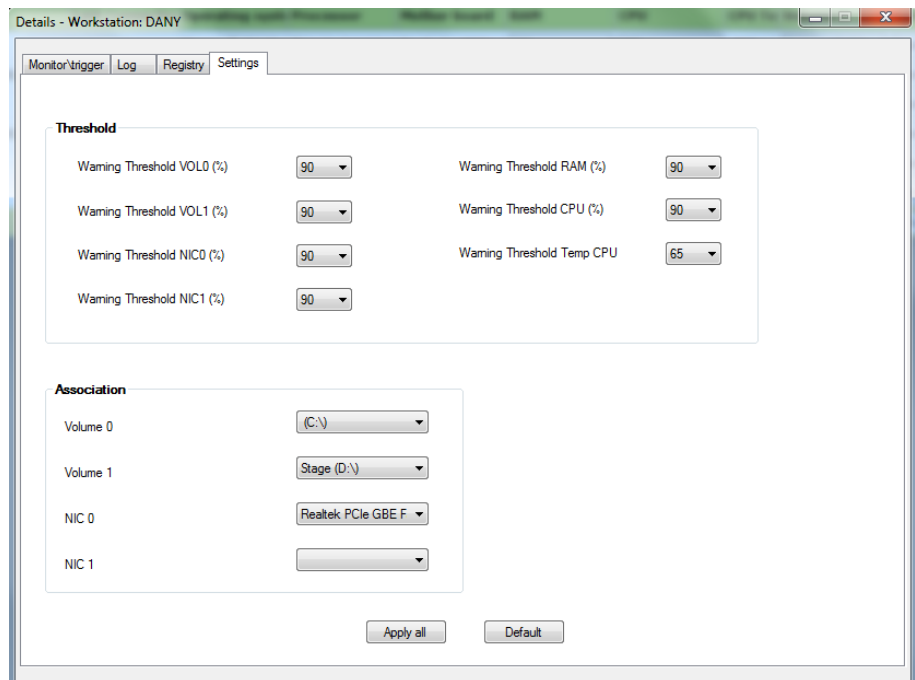
It ensures all machines operate at peak performance. Automated checks and customizable alerts enable to address issues to ensure the control of network at every moment.

RAM	CPU	CPU Te	Volume 0	Volume 1	NIC 0 - Down L	NIC 0 - Up Load	NIC 0 - Net Lo
78%	6%	41°C	52%	1%	0%	0%	0%
55%	0%	51°C	22%	35%	0%	0%	0%
75%	0%	44°C	55%	7%	0%	0%	0%
68%	11%	46°C	21%	42%	0%	0%	0%
0%	0%	0°C	Not available	Not available	Not available	Not available	Not available
0%	0%	0°C	Not available	Not available	Not available	Not available	Not available
0%	0%	0°C	Not available	Not available	Not available	Not available	Not available

MediaDoctor alert notification

The settings panel of MediaDoctor permits to set the alert thresholds in independent way for each workstation or in standard way using the Apply All function.





MediaDoctor settings window

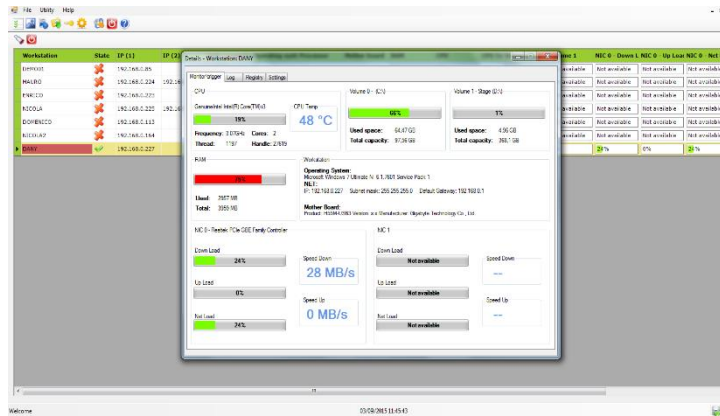
The GUI is extremely user-friendly and all the tables and grids can be configured and customized by user.

The user can also customize the grid layout choosing which fields he wants to see and their order.

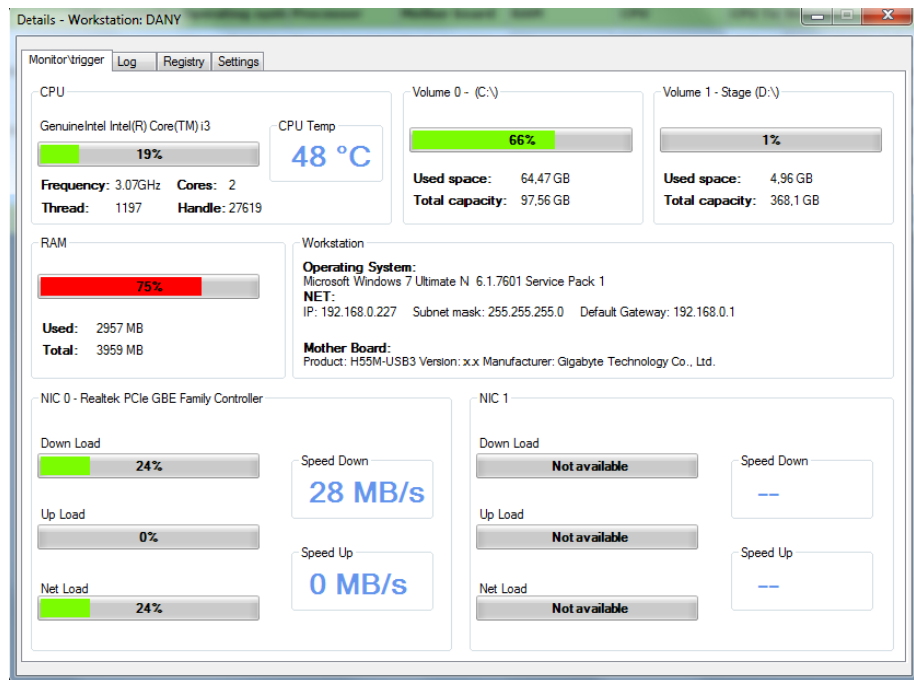
Furthermore is possible to visualize only a selected set of workstations.

## 2.2. Single Workstation Details

By double clicking on a selected workstation it is possible to see hardware and performance details of that machine.



MediaDoctor workstation popup

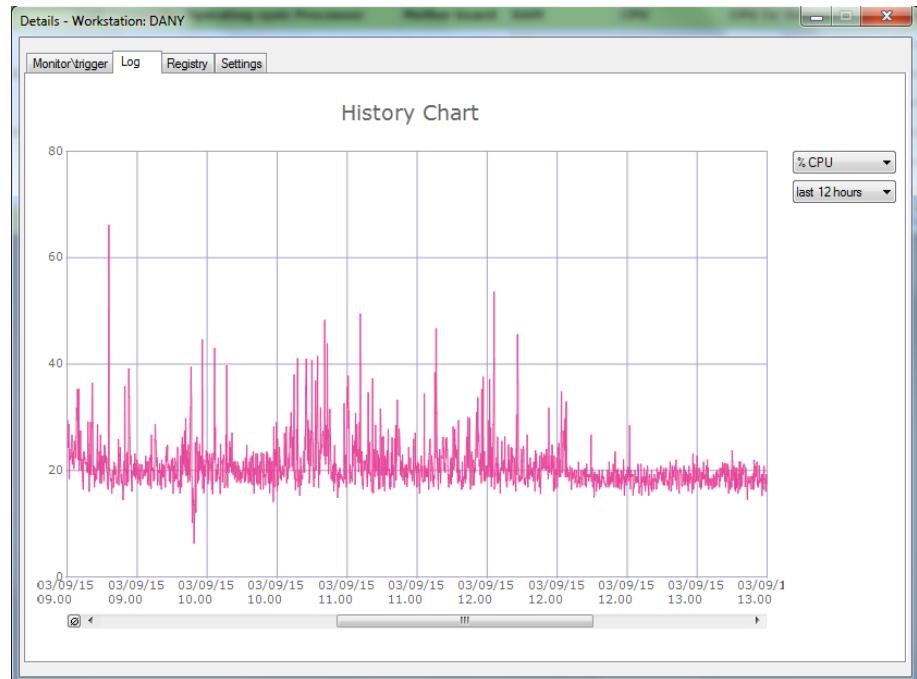


MediaDoctor workstation details

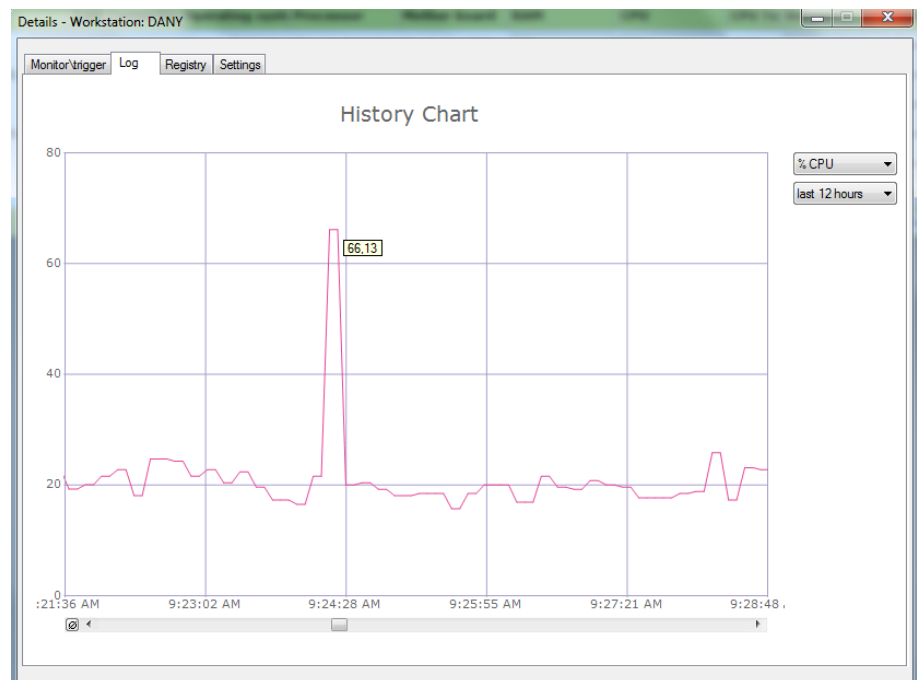
### 2.3. History Log

With SI Media Doctor system the user can easily retrieve history data about many characteristics, for instance: CPU percentage use, CPU temperature, network load percentage.

The desired information is displayed on a graphic with interval time of 1, 4, 12, 24 hours or one week. It is possible to act with zoom on the graphics.



Example: History Log Graph of CPU percentage in last 12 hours



Example: History Log Graph zooming function



## 2.4. Windows Registry

Thanks to the central control of workstations, MediaDoctor can retrieve the windows registry of machines remotely. The events are shown in a grid, filtered by date, time and type of registry.

Level	Date - time:	Source	ID Event	Category
Error	02/09/15 16:09	Office Software Prot		(0)
Error	02/09/15 16:09	Office Software Prot		(0)
Error	02/09/15 16:09	Office Software Prot		(0)
Error	02/09/15 16:09	Office Software Prot		(0)
Error	03/09/15 08:09	WinMgmt		(0)
Information	31/08/15 15:08	Office Software Prot	1073742724	(0)
Information	31/08/15 15:08	Office Software Prot	1073742890	(0)
Information	31/08/15 15:08	Office Software Prot	1073742827	(0)
Information	31/08/15 15:08	Office Software Prot	1073742827	(0)
Information	31/08/15 18:08	gupdate		0 (0)

Registry name: Application  
Source: Office Software Protection Platform Service  
Date - time: 31/08/2015 15:27:26  
ID Event: 1073742724  
Category: (0)  
Level: Information

MediaDoctor Windows Registry retrieve

## Contact SI MEDIA

### Business Details

**HQ:** Via Costanza 5 -31039  
Riese Pio X (Treviso) Italy

**Phone:** +39 0423 750075

**Singapore Branch:**  
20 Martin Road, #05-02  
Seng Kee Building, 239070  
Singapore

**Phone:** +65 8432 5394

**E-mail:** info@si-media.tv

